

# Rotogal



# Rotogal



# Rotogal



# Rotogal



# Rotogal

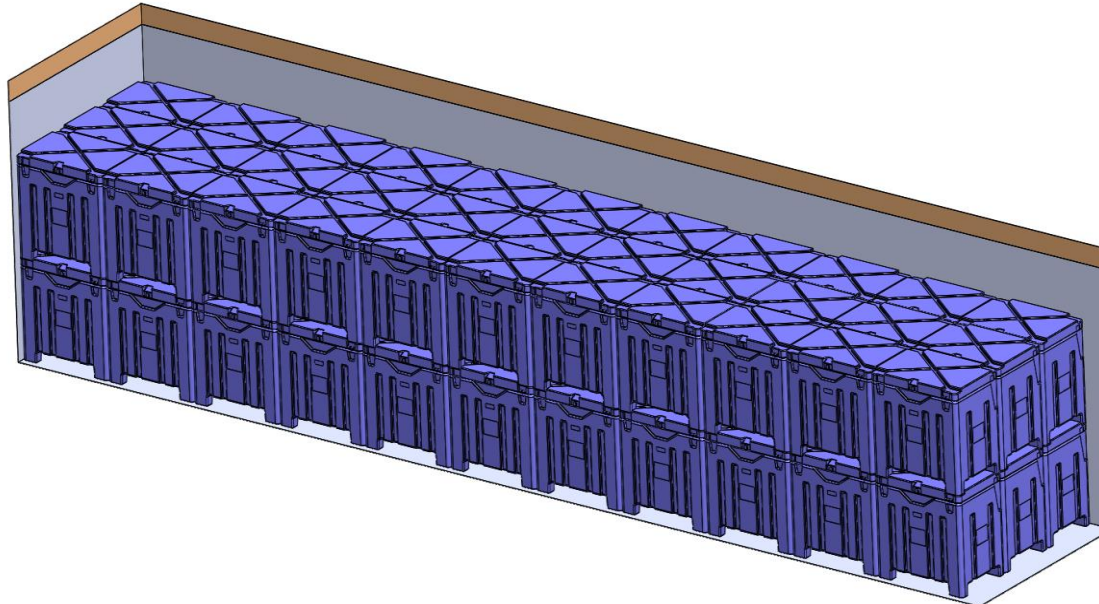
- **Maße:** 1200 x 800 x 1005 mm
- **Volumen:** 500L
- **Gewicht:** 91,73kg
- **Füllgewicht Pellets:** 400,00kg
- **Wärmeleitfähigkeit:** 0,024 W/(m·K)
- **Wärmedurchgangskoeffizient:** 0,300W/(m<sup>2</sup>·K)

# Rotogal

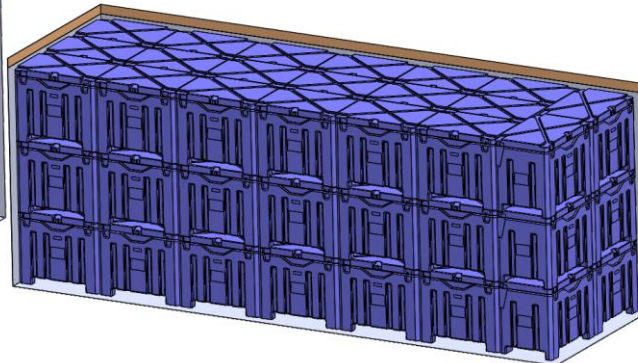
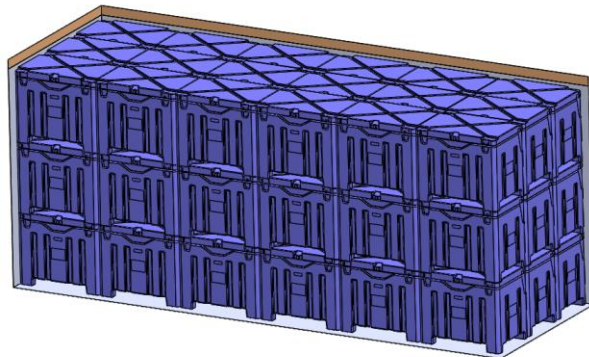
## **Sublimation:**

- nach 06 Std. ca. 1,2%
- nach 18 Std. ca. 4,1%
- nach 24 Std. ca. 5,1%
- nach 48 Std. ca. 9,9%

# Rotogal

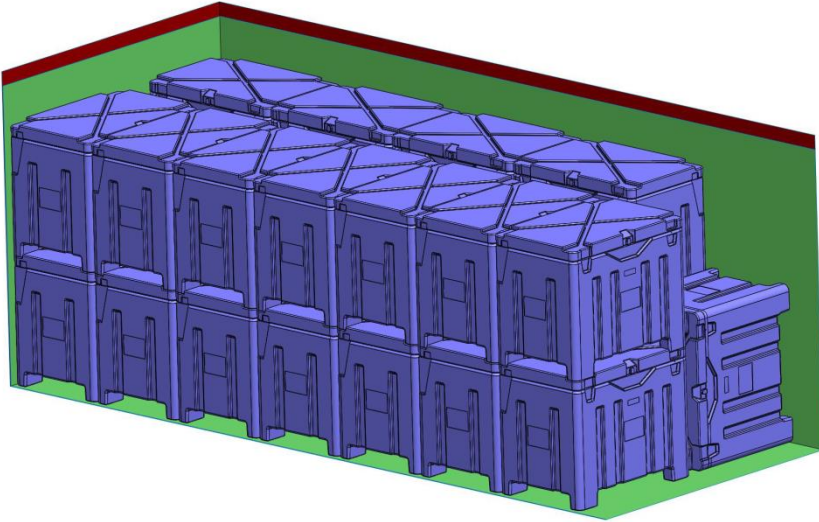


**Sattelzug (66DIB)**

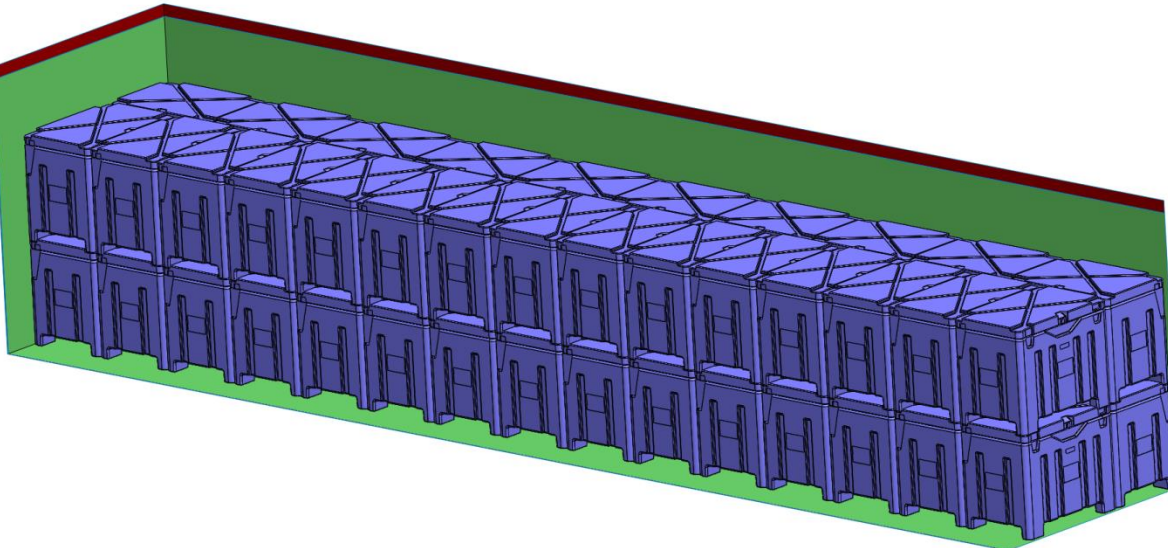


**Jumbo-LKW (114 DIB)**

# Rotogal



**20-Fuß-Container (23 DIB)**



**40-Fuß-Container (40 DIB)**